

Your Path to Careers Around the Globe

2021-2022 CHEJU HALLA UNIVERSITY

International Students
Admissions Guide

Welcome to Jeju Island!

Jeju Island is a world-famous tourist destination in Northeast Asia, known for its exceptional natural beauty.

Enjoy the convenience of a modern city, with the additional benefits of outstanding natural scenery, clean air, and limitless outdoor recreation.

- **Downtown Campus:** Cheju Halla University is located in the heart of Jeju City, just 15 minutes from popular restaurants, bars, cafes, department stores, shopping malls and Jeju International Airport.
- **Excellent Public Transportation:** Buses & taxis will take you from the Cheju Halla University campus to anywhere you wish to go on the island.
- **Health & Safety:** Jeju city has a clean and safe environment, and Cheju Halla General Hospital, a sister institution of Cheju Halla University, is a mere 10 minutes away by car from campus.



Cheju Halla University

Where Your Global Employment Career Begins

Cheju Halla University's mission is to become Northeast Asia's most career-focused educational institution. We are constantly improving our programs in order to produce globally competitive graduates. Striving to exceed global educational standards, we have implemented innovative learning approaches and programs that focus on core job skills.

Through our exchange programs with leading universities in the United States, Australia, Japan, China and other countries, our students gain the skills and confidence to compete in any country.

Are you looking to expand your horizons and make your dreams a reality? We will help you reach your goals!

Come to Cheju Halla University and achieve your full potential!



Sung-Hun Kim, Ph.D.
President, Cheju Halla University

A handwritten signature in black ink, reading "Sung-Hun Kim".



CHU Korean Track Program

Students who have passed TOPIK Level 3 may study in any department at the university. Korean Language classes are also provided additionally.

Tuition Fee: USD \$2,500 / Semester

CHU English Track Program

We currently have 7 departments that offer programs in English for foreign students who wish to study Nursing, Hotel Management, Hotel and Restaurant Management, International Business, Intelligent System Engineering, Industrial Design and Hotel Culinary Arts. Minimum language requirement: IELTS 5.5, TOEFL 530 or TEPS 600.

Tuition Fee: USD \$2,500 / Semester

※ A program for US CPA exam preparation is offered in the International Business Department.

CHU 'Online + Offline' Combination Program

New students who cannot come to CHU right away can begin their program by taking online classes at home (up to $\frac{3}{4}$ of total credits) and finish the remaining classes on campus. The program is available for both Korean and English Track classes. Online tuition fees are just 50% of regular tuition.

**Tuition Fee: USD \$2,500 / Semester (Offline)
USD \$1,250 / Semester (Online)**

	Spring Semester	Fall Semester
Application Submission	October ~ December	April ~ June
Tuition Fee Payment and Registration	November ~ January	May ~ July
Semester Begins	March	September

※ CHU academic transcripts are recognized and accredited by all our global exchange partner universities.

The University in Korea to Provide 4-Year Bachelor's Degree Programs in addition to 2-Year and 3-Year Associate Degree Programs

Program	Department	Korean Track	English Track	Transfer
Bachelor's Degree (4-year)	Nursing	O	O	O
	Hotel Management	O	O	O
	Hotel and Restaurant Management	O	O	O
	International Business	O	O	O
	Social Welfare	O		O
	Broadcasting, Film, and Information Technology	O		O
	Intelligent System Engineering	O	O	
	Equine Resources and Management	O		O
	Equine Science	O		O
	Industrial Design	O	O	O
Associate Degree (3-year)	Clinical Laboratory Science	O		
	Physical Therapy	O		
	Occupational Therapy	O		
	Emergency Medical Technology	O		
	Radiologic Technology	O		O
	Health Administration	O		O
	Early Childhood Education	O		
	Architectural Design	O		
Associate Degree (2-year)	Tourism Management	O		O
	Tourism and English	O		O
	Tourism and Chinese	O		O
	Tourism and Japanese	O		O
	Hotel Culinary Arts	O	O	O
	Leisure Sports	O		
	Social Welfare	O		O
	Social Welfare Administration	O		O
	Computer Information	O		O
	Computer Multimedia	O		
	Environmental Horticulture	O		
	Music	O		
	Beauty Arts	O		O

※ Top-up 1-Year and 2-Year bachelor's degree programs are provided for the respective 3-Year and 2-Year associate degree programs.

CHU Language Education Center

Whether you're starting with the alphabet or building on existing proficiency, the Language Education Center is where you can get official certification of your newfound skills, meet locals, fellow students and other new arrivals, and make new friends!

Programs

- Standard Korean courses for basic to advanced students
- Special scholarship program
- Special class for TOPIK (Test of Proficiency in Korean)
- Orientation Course for Immigrants
- Korea Immigration & Integration Program (KIIP)

Scholarships

GPA Scholarship	Based on students' GPA (15% ~ 100% of tuition)
Family Scholarship	Available when 2 or more members of the same family attend Cheju Halla University.
Halla Scholarship	Screened and selected by the Scholarship Approval Committee.
External Scholarship	Outstanding international students who demonstrate a positive impact on the international student community.

Halla Dormitory

Each room is equipped with high-speed internet, heating, air conditioning and comfortable furniture. Students have full access to a lounge, laundry room, and well-equipped kitchen. There are numerous parks, restaurants and coffee shops nearby.



Room



Kitchen



Student Lounge

High-tech Facilities in the Heart of Jeju City

Located in downtown Jeju, CHU has the finest campus facilities that Korea has to offer. We'll give you the training you need for the job you want, and the chance to enjoy life to its fullest in the nation's most sought-after island destination.



Lecture Room



Halla Art Hall



Off-Campus Training Facilities



Halla Convention Center

CHU Practicum Program



Campus Life

We want to make sure you enjoy your stay in Korea. Be sure to take advantage of our wide range of fun activities that help you assimilate to island life and experience all that Korean culture has to offer.



Global Mentor-Mentee Program



Cultural Tours



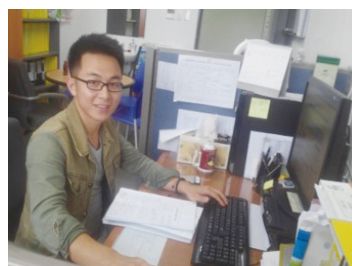
Hanbok Experience



Korean Spa Experience

Work While You Study

We offer students part-time jobs at the university to get hands-on experience and become familiar with Korean culture. International students are allowed by law to do part-time work off campus, and we provide job leads and ongoing assistance.

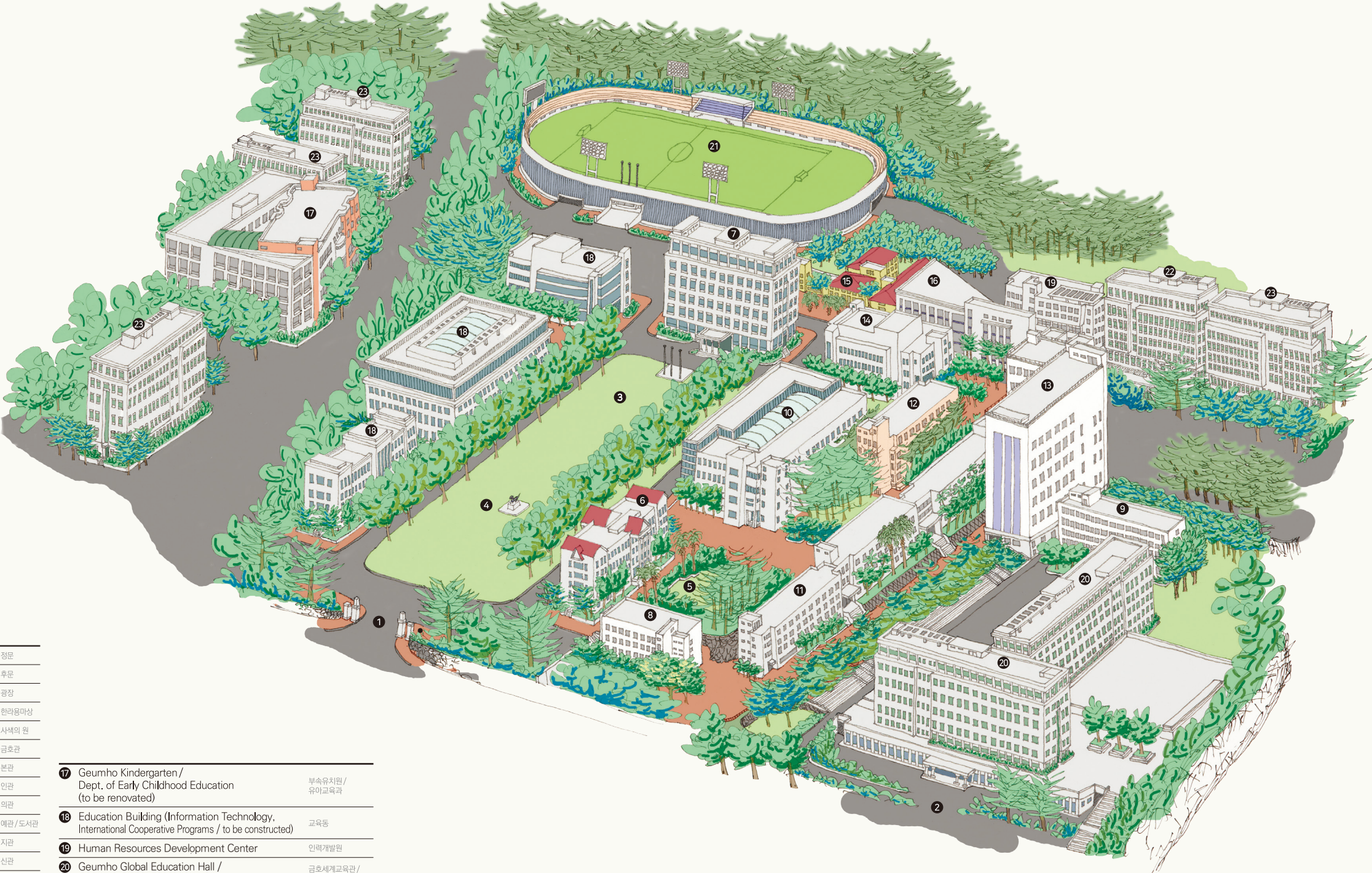


Required Documents

No.	Language Center	Undergraduate		Transfer
		New	Transfer	
1	O	O	O	Official Application Form
2	O			Self-Introduction
3		O	O	Personal Statement and Records of School Attendance
4	O	O	O	Applicant's and Parent's Passport Copy
5	O	O	O	Certificate of (prospective) High School/ College/University Graduation, and Transcript(s)
6		O	O	Certificated or Documents about Korean/ English Proficiency
7	O	O	O	Family Relationship Certificate (applicant oriented)
8	O	O	O	5 Photos in Color (3.5x5 cm)
9		O	O	Certificate of Tuberculosis Examination
10	O	O	O	Financial Affidavit
11	O	O	O	Financial Evidence Applicant's or the Parents' Bank Statement with Outstanding Balance of (Undergraduate USD 18,000, Language Center USD 10,000)
12	O	O	O	Certificate of Translation
13		O	O	National Health Insurance Subscription Certificate
14		O	O	Certificate of Entry and Exit Records
15		O	O	Alien Registration Card (issued in Korea)
16	O			Guarantor Form

CHU Campus Map

2030



1	East Gate	정문
2	North Gate	후문
3	Plaza	광장
4	Halla Steed Statue	한라옹마상
5	Meditation Garden	사색의 원
6	Geumho Hall	금호관
7	Administration Building (to be constructed)	본관
8	Hall of Humanity	인관
9	Hall of Righteousness	의관
10	Hall of Courtesy	예관/도서관
11	Hall of Wisdom	지관
12	Hall of Fidelity	신관
13	Geumho Mirae Hall	금호미래관
14	Halla Art Hall	한라아트홀
15	Halla Dormitory	한라학사
16	Hi-Tech Center	하이테크센터

17	Geumho Kindergarten / Dept. of Early Childhood Education (to be renovated)	부속유치원 / 유아교육과
18	Education Building (Information Technology, International Cooperative Programs / to be constructed)	교육동
19	Human Resources Development Center	인력개발원
20	Geumho Global Education Hall / Halla Convention Center	금호세계교육관 / 한라컨벤션센터
21	University Stadium / Parking Lot (to be constructed)	대학스타디움 / 주차장
22	Dormitory (to be constructed)	기숙사
23	Dormitory (to be constructed)	기숙사

2021-2022
CHEJU
HALLA
UNIVERSITY

38, Halladaehak-ro, Jeju-si, Jeju Special Self-Governing Province, Republic of Korea (South Korea)
Enrollment Inquiries: Tel +82-64-741-7405 | Fax +82-64-741-7434 | Email oia@chu.ac.kr



제주한라대학교
CHEJU HALLA UNIVERSITY